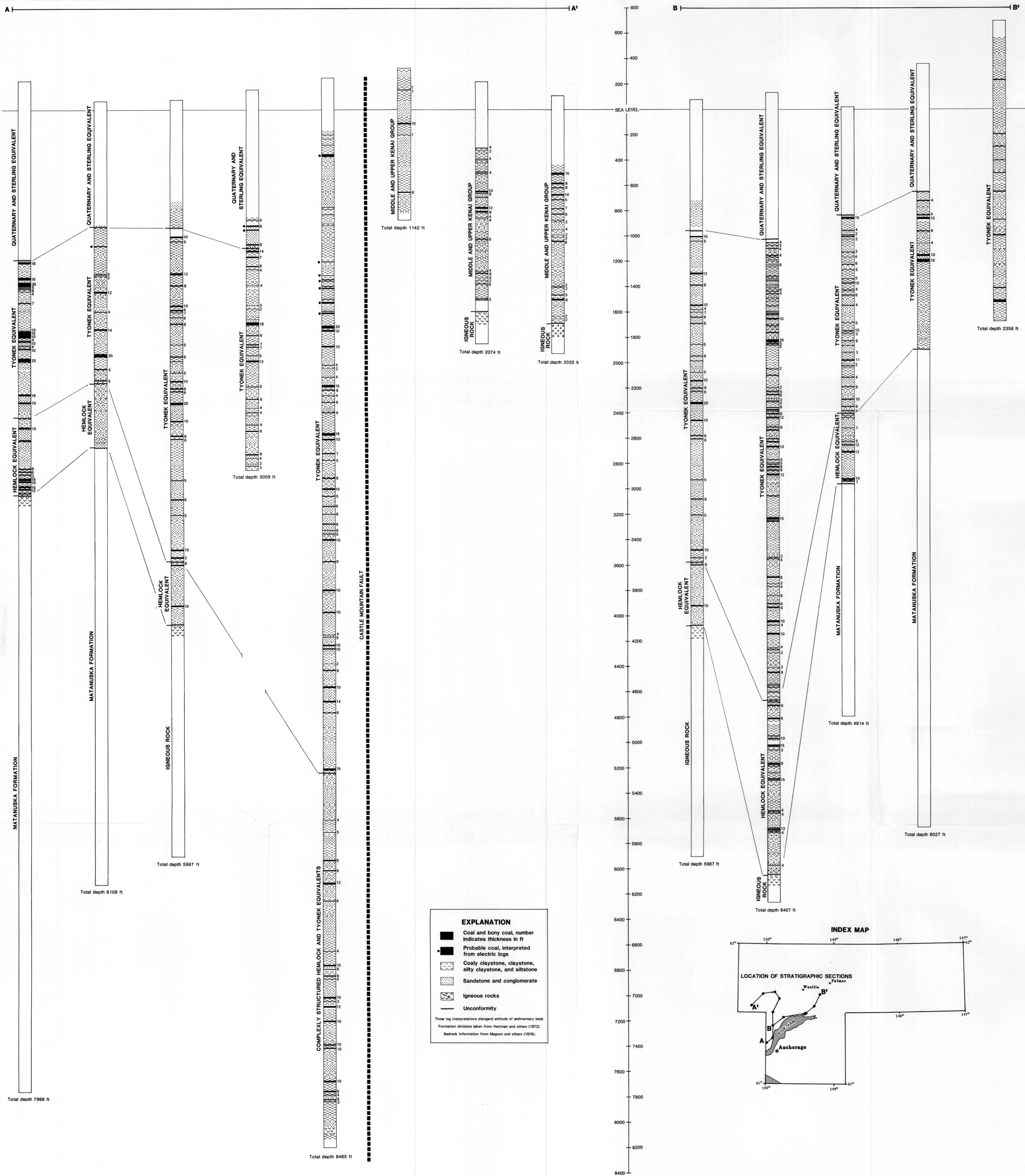


ALASKA DIVISION OF GEOLOGICAL & GEOPHYSICAL SURVEYS

Atlantic Refining Lorraine 1 SEC 21 T14N R4W
 Union Knik Arm State 1 SEC 1 T14N R4W
 Pan American Big Lake 1 SEC 1 T15N R4W
 Union Knik Arm 1 SEC 2 T16N R4W
 Lum Lovely Beaver Lakes 1 SEC 32 T18N R3W
 US Dept Mines Coal Test 2 SEC 20 T16N R3W
 Hill Production Red Shirt Lake 1 SEC 24 T18N R5W
 Inlet Oil Fish Creek 1 SEC 13 T17N R6W
 Pan American Big Lake 1 SEC 1 T15N R4W
 Union Fish Creek 12-8 SEC 8 T16N R3W
 BP Exploration Wasilla State 1 SEC 33 T17N R1W
 Austral Oil JM Needham 1 SEC 7 T17N R1W
 Hill Production Fishhook 1 SEC 3 T18N R1W



CORRELATION OF STRATIGRAPHIC SECTIONS INTERPRETED FROM WELL-LOG DATA IN THE SUSITNA AND UPPER COOK INLET BASINS