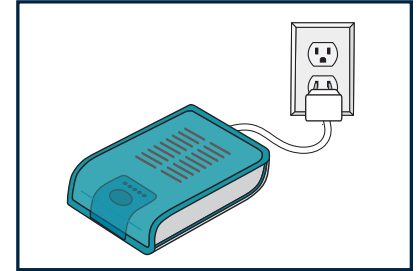


UV-Clean & Dry Box User Guide

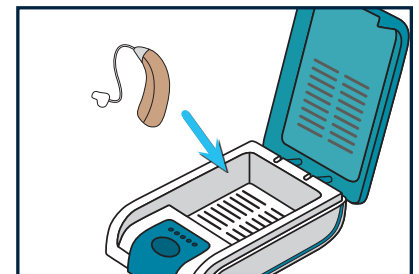
Assembly

1. Connect one end of the USB charger cord to the UV-Clean & Dry Box.
2. Connect the other end of the cord to the power adapter.
3. Plug the power adapter into a standard outlet. The UV-Clean & Dry Box will switch to standby mode.



Instructions For Use

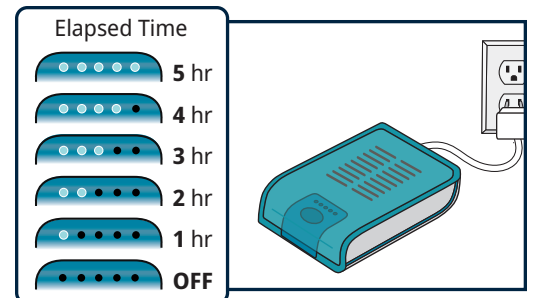
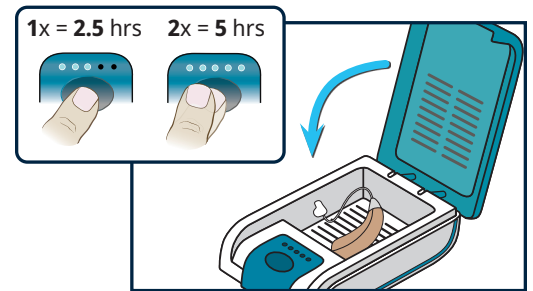
1. Place the hearing aid inside the box. For non-rechargeable models, remove the battery from the hearing aid first.
2. Press the start button to set the cycle:
 - Press **once** for the **short cycle (2.5 hours)**. Three LED lights will light up.
 - Press **twice** for the **long cycle (5 hours)**. Five LED lights will light up.
3. Close the box to start. The LED lights indicate the remaining heating period (see chart to the right).
4. Allow the hearing aid to cool for at least 5 minutes before use.



Product Information

An air stream of 52 degrees Celsius (125.6°F) passes along the sides of the box to heat up the hearing aid. At the same time, the UV-C light (wave length 254nm) lights up, sterilizing the hearing aid. After about 8 minutes, the sterilization process is finished and the UV-C light switches off, but the hot air stream continues.

Once the cycle is completed, the hot air stream switches off. If the device is accidentally opened while the UV-C light is still turned on, the CPU will safely turn off the UV-C light and stop the calculated UV-C time. After the heating period expires, the UV-Clean & Dry Box will automatically shut down and all the LED lights will turn gray.



Warnings and Tips

- Disconnect from power source when not in use.
- If you need to stop the dehumidifying process or interrupt the UV-C process, press the start button for 3 seconds or disconnect the power source.
- UV-C light kills germs, bacteria, and viruses. It will not remove dirt, oil, or ear wax. **It is not intended to replace regular cleaning.**
- The UV-Clean & Dry Box contains high pressure. It should only be opened or repaired by professionals.



800-918-3914

Mon.-Fri. (For current hours of operation, visit MDHearingAid.com/contact-us)



support@MDHearingAid.com

24 hours a day, 7 days a week